



■ CH25 office chair vers. 031 only seat upholstered



■ CH25 office chair vers. 233 totally upholstered



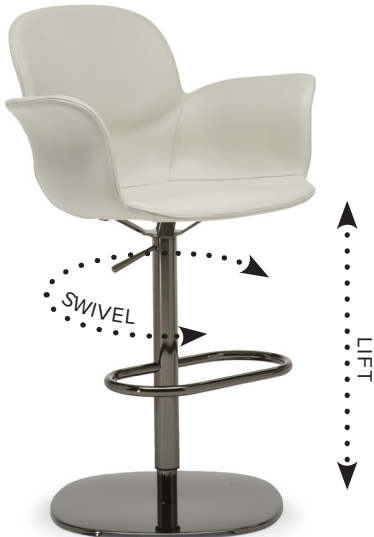
■ CH25 dining chair vers. 012 upholstered seat and back



■ CH25 dining chair vers. 233 totally upholstered



■ CH25 dining chair vers. 233 totally upholstered



■ CH25 bar stool vers. 233 totally upholstered

SCHEMATICS

65cm x 55cm H 82cm
25,59" x 21,65" H 32,28"

62cm x 55cm H 82cm
24,41" x 21,65" H 32,28"

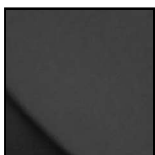
62cm x 53cm H 82cm
24,41" x 20,87" H 32,28"

FINISHINGS

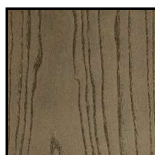
Frame finishing



WHITE



BLACK



Blonde Ash

TECHNICAL INFORMATION

The essential charm of the Nanà chair arises from how the elegant seat - a single shell, with upholstered seats - which can be combined with four different bases - allows you to maintain aesthetic continuity in the spaces, responding to multiple uses. A new way of reading the increasingly versatile and functional seat that creates continuity in the different spaces and improves them with simplicity and elegance.

PRODUCT DETAILS

Extremely versatile project, consisting of a single body in rigid black or white fire-retardant Baydur® that can be fully padded (ver. 233) or not.

Baydur is a high-density structural technopolymer, finished with polyurethane paints with a soft touch effect.

When the shell (white or black) is visible, there is the possibility to select internal upholstery for seat and back (ver. 012) or only seat with visible back (ver 031).

The medium-density structural rigid polyurethane, thanks to its structure that has a compact outer part with a cell core - allows many possibilities at the design level.

It involves the use of aluminum molds, which faithfully reproduce the desired product with high standards.

The Project includes 4 different types of bases:

Dining chair with frame in solid ash (blond ash finishing); or in metal with 4 spokes with swivel wheels; with 4 legs in tubular metal of variable thickness; or in the bar stool version with central foot.

10 gloss matt blond ash finish for wooden base, black or white metal for metal bases and glossy black chrome for stool.

Given in particular the shell coupling system that allows the interchangeability of the bases, the product must not be subjected to decentralized loads, it has been designed to be used in normal support conditions (on 4 legs or on the base).

The company relieves itself of all responsibility for any damage caused to delicate or soft floors.

Avoid improper use of the product: do not step on the product with your feet, or on the footrest or armrests. In particular, avoid oscillations that could affect the operation and safety of the user. The seat cushion padding is in medium density polyurethane. Available in leather cat. 15 Lemans, 30 Stromboli.

NOTES
