



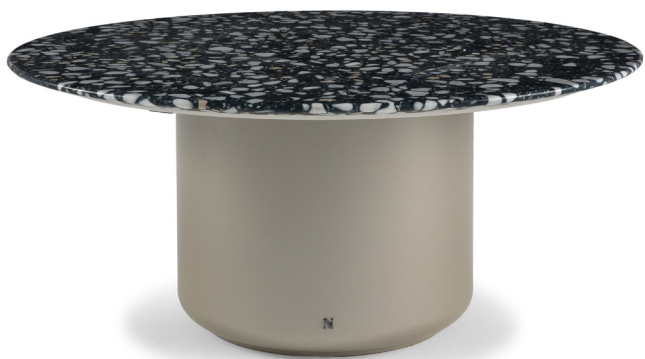
■ T845001XNA



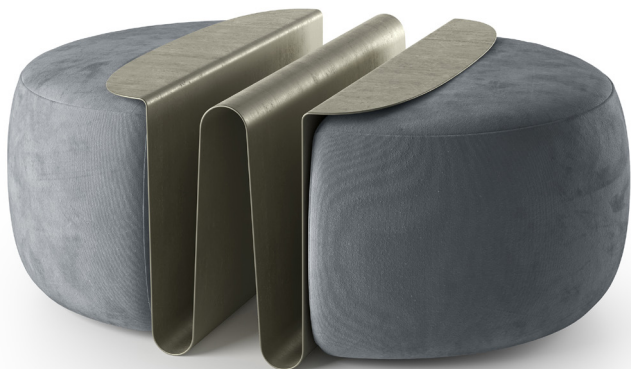
■ T845005XNA



■ T845003XNA



■ T845004XNA



■ T845006XNA magazine rack + 3201 pouf vers. 643 (draft image)

ALL PICTURES SHOWN ARE FOR ILLUSTRATIVE PURPOSE ONLY. ACTUAL PRODUCT MAY VARY DUE TO PRODUCT ENHANCEMENT.

SCHEMATICS

ELLIPTIC FIXED



110cm x 220cm H 75cm
43,31" x 86,61" H 29,53"

MULTIFORM CENTRAL



67cm x 53cm H 41cm
26,38" x 20,87" H 16,14"

ROUND FIXED



138cm x 138cm H 75cm
54,33" x 54,33" H 29,53"

Redondo CENTRAL



100cm x 100cm H 44cm
39,37" x 39,37" H 17,32"

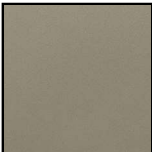
FINISHINGS

Frame finishing

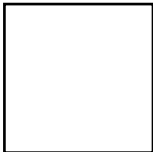


GOLD

Top finishing



GOLD



Stardust



Gold & Glass

TECHNICAL INFORMATION

VOYAGE DINING TABLE BY NIKA ZUPANC

The refinement of the Deep collection is best expressed in the new Dining area with Voyage. Available in an oval or round shape, it is an iconic table with sinuous and elegant shapes characterized by a mixture of natural and industrial materials, which come together in a unique refined design. An object with a strong identity inspired by the shapes of the large chimneys of trans oceanic retro ships.

Monolithic steel base combined with precious tops in different materials. The top in Stardust - Terrazzo Stone (a very trendy material in interior design) is a beautiful custom color mix and design created for Natuzzi. It's inspired by the starry sky of summer nights. Voyage is the new protagonist of a timeless style in our collection.

PRODUCT DETAILS:

Dining table with a laser cut curved steel base, polished and Interpon powder coated with a gold-colored finish that has a matte satin texture. The special painting represents a protective and decorative coating that guarantees high scratch resistance, exceptional durability, and easy cleaning. Cylindrical base with internal metal ballast to allow and improve stability Available in two sizes (oval and round) and two different top material finishes.

Edge of the top is finished with a curved bevel. This material has an extraordinary resistance to abrasion and has a chromatic homogeneity.

Top in STARDUST - Terrazzo Stone evokes "The Venetian Terrace" which represents a product that the whole world recognizes as an artistic and cultural expression of the territory and of Italian manufacturing. The combination of different colors and materials guarantees the possibility of satisfying even the most modern aesthetic needs.

Top in Gold & Glass - Finish was born from the search for new materials to interpret the contemporary interior. Top made of laminated glass (8 + 6mm) thick coupled with digitally printed silver film. Thanks to the special lamination process of the glass, it is possible to join 2 glass plates with a PVB or EVA film to create original furnishings. The laminated glass is processed through a hot and vacuum process that binds the various materials together.

VOYAGE COFFEE TABLE BY NIKA ZUPANC

The Voyage coffee table elegantly completes our Living furnishing assortment from the DEEP collection. It is available in rounded shapes with sinuous and curved lines characterized by a mixture of natural and industrial materials, which blend into a unique refined product.

PRODUCT DETAILS:

The Coffee table central base is made of laser cut curved steel. It is polished and Interpon powder coated with a matte, gold-colored satin finish. The special painting represents a protective and decorative coating that guarantees high scratch resistance, exceptional durability, and easy cleaning. The cylindrical base has an internal metal ballast to improve stability.

Available in two sizes (oval and round) and two different material top finishes.

VOYAGE MAGAZINE RACK BY NIKA ZUPANC

At a time when everything has become digital, Voyage

Magazine Holder invites you to enjoy the pleasure of carving out time for reading or leafing through a magazine in complete relaxation. The element completes our furnishing project for the Wave sofa. An original design for this metal magazine rack that is composed of soft, curved lines. The gold color of its precious metallic finish make it a real living jewel. A versatile object that is particularly suitable for elegant and sophisticated environments. Positioned next to the seat or integrated into the pouf to offer new furnishing solutions

PRODUCT DETAILS

Made of curved laser cut sheet metal. It is polished and Interpon powder coated with a matte, gold- colored smooth finish. The special painting represents a protective and decorative coating that guarantees high scratch resistance, exceptional durability and easy cleaning.

It is a unique element that can be positioned on the ground next to the seat, or integrated into the Pouf and Ottoman versions of the 3201 Wave model.