



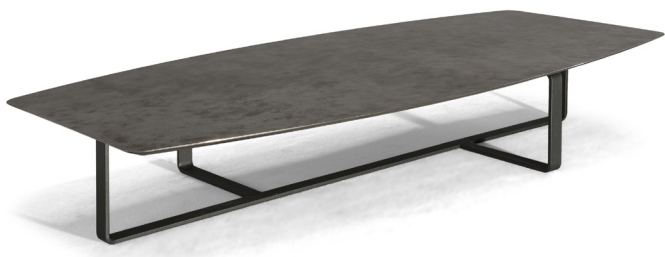
■ T134MX3



■ T134XX3



■ T134MM5



■ T134M05



■ T13401X



■ T13403X

ALL PICTURES SHOWN ARE FOR ILLUSTRATIVE PURPOSE ONLY. ACTUAL PRODUCT MAY VARY DUE TO PRODUCT ENHANCEMENT.

SCHEMATICS

SQUARE CENTRAL



90cm x 90cm H 38cm
35,43" x 35,43" H 14,96"

RECTANGULAR CENTRAL



70cm x 148cm H 25cm
27,56" x 58,27" H 9,84"

73cm x 118cm H 39cm
28,74" x 46,46" H 15,35"

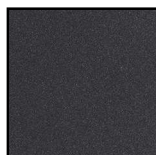
RECTANGULAR ACCENT



46cm x 56cm H 50cm
18,11" x 22,05" H 19,69"

FINISHINGS

Frame finishing



ANTHRACITE

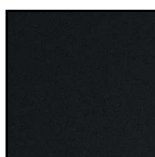
Top finishing



SMOKED OAK



NICKEL SILVER



GLAZED COFFEE



GLOSSY
CALACATTA
GOLD



Lilac Marble

TECHNICAL INFORMATION

Structure in anthracite metal.

Top in:

- Calacatta gold marble. Top predominantly white characterized by streaked or cloudy veining, mainly ochre yellow with possible subtle nuances tending to grey/green or red
- nickel silver metal. Stainless steel base which undergoes a mirror polishing and an uneven silvering process
- wood veneer
- float tempered glass, 8mm thick, acid etched effect, under-side painted and scratch-resistant

Legs with adhesive felt pads.

Date of birth: 06-2013

Number of packages: 2

Made in Italy

NOTES
