



■ T156XH3



■ T156VMS



■ T156OX3



■ T156OX4



■ T156XZ3



■ T156LRS



■ T156XO3



■ T156OX2

ALL PICTURES SHOWN ARE FOR ILLUSTRATIVE PURPOSE ONLY. ACTUAL PRODUCT MAY VARY DUE TO PRODUCT ENHANCEMENT.

SCHEMATICS

square Central



100cm x 100cm H 27cm
39,37" x 39,37" H 10,63"

Round ANGULAR



56cm x 56cm H 50cm
22,05" x 22,05" H 19,69"

Round Accent

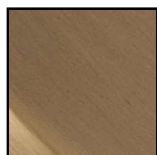


45cm x 45cm H 34cm
17,72" x 17,72" H 13,39"

56cm x 56cm H 50cm
22,05" x 22,05" H 19,69"

FINISHINGS

Frame finishing

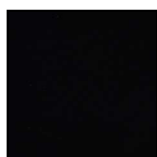


BRONZE



Pewter

Top finishing



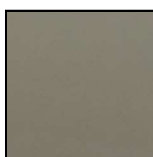
COFFEE



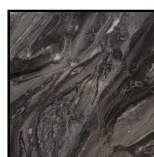
SMOKED OAK



CALACATTA
GOLD



BRONZE MIRROR



MARMO
OROBICO



INVISIBLE GRAY



Rain Forest Brown

TECHNICAL INFORMATION

DESIGNER: Tapinassi & Manzoni

Designed by the designers of Studio Memo, the Herman coffee tables play with shapes and sizes, standing out above all for their cutting-edge design and comfort. They are characterised by refined materials and a rigorous, precise style that makes them truly timeless. Thus the design takes shape and renews itself, continually emanating beauty, design and harmony with the passing of time. The various configurations can intersect to create unique arrangements that are perfectly integrated with their environment.

NOTES
