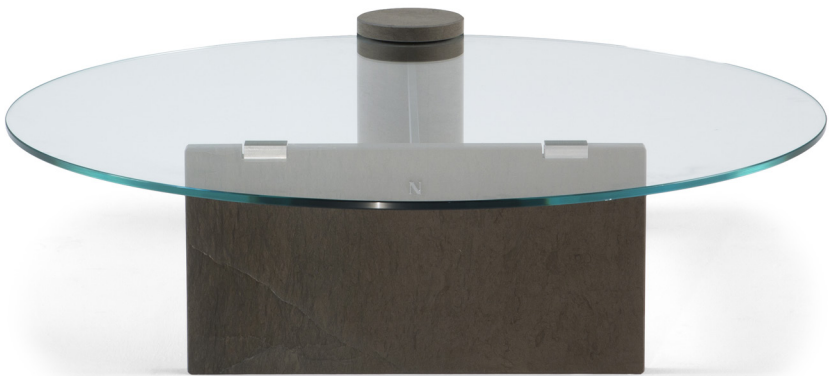




■ T847001XNA + T847002XNA



■ T847001XNA



■ T847002XNA



■ T847003XNA



■ T847004XNA

ALL PICTURES SHOWN ARE FOR ILLUSTRATIVE PURPOSE ONLY. ACTUAL PRODUCT MAY VARY DUE TO PRODUCT ENHANCEMENT.

SCHEMATICS

ROUND CENTRAL



108cm x 100cm H 30cm
42,52" x 39,37" H 11,81"

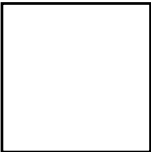
ROUND ACCENT



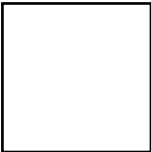
55cm x 50cm H 50cm
21,65" x 19,69" H 19,69"

FINISHINGS

Frame finishing



Pewt/Fossena



Carrara Pewter

Top finishing



Extra Clear Glass

TECHNICAL INFORMATION

Designer: Claudio Bellini

FROST Coffee Table, is part of the Solar collection that is inspired by the drops of dew on spring flowers. The glass seems to magically settle on stone bases. It is a program of versatile tables for the living area that are available in various sizes and different heights in order to respond to the various functions of living.

A skilful mix of materials creates a sophisticated and elegant proposal for the living area. Objects that express a strong identity of a refined interior collection and modern decoration.

PRODUCT DETAILS

We are introducing the Fossena Stone into the Natuzzi collection for this program. It is a limestone of North African origin, whose quarries are located in Tunisia. The stone has a compact and homogeneous background and is gray / brown in color. This material stands out for its minimal appearance, enhanced by a homogeneous and uniform structure. Evanescent rust-colored shadows and subtle ivory veins liven up the surface of the Fossena stone. The presence of some white salt or dark spots are another feature of this material.

Available in both central and accent versions, the program is characterized by two bases (cylinder and parallelepiped) completely made of stone, hooked together by a pewter painted steel tube.

Top in extra-clear tempered glass, with a finished and polished edge (10mm thick). All the glass parts are glued to electro-welded steel elements by means of UV gluing technique to the stone bases. The glue used to weld the glass plates is cured through the use of U.V. lamps which creates a very resistant connection. This gluing technique guarantees maximum effectiveness and resistance as well as high transparency.

NOTES
