



■ E02801X



■ E02802X



■ E02803X



■ E02804X



■ E02807X



■ E02805X



■ E02806X



■ E02808X

ALL PICTURES SHOWN ARE FOR ILLUSTRATIVE PURPOSE ONLY. ACTUAL PRODUCT MAY VARY DUE TO PRODUCT ENHANCEMENT.

SCHEMATICS

Round ANGULAR



50cm x 50cm H 55cm
19,69" x 19,69" H 21,65"

Round Central



90cm x 90cm H 39cm
35,43" x 35,43" H 15,35"

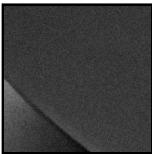
Round Accent



40cm x 40cm H 45cm
15,75" x 15,75" H 17,72"

FINISHINGS

Frame finishing



Black Brunito

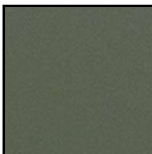
Top finishing



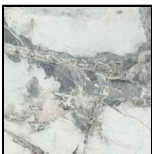
WALNUT



SMOKED OAK



GREEN



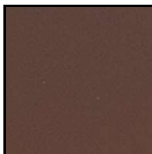
INVISIBLE GRAY



SAHARA NOIR



LILLAC



BRICK RED



HEAVENLY



Lilac

TECHNICAL INFORMATION

DESIGNER: Natuzzi Style Center

Set of coffee and accent tables to serve the living room, also versatile for use as convenient supporting surfaces in other areas of the home. Available in various sizes and heights for various uses in the home. These tables can stand alone but create a special ambience when used in combination with each other. A proposal resulting from stylistic research involving shapes and materials

The Estro tables are real gems, whose particular structure gives the final effect a strong impact, due to the geometries of the structure being emphasized by the top surface shape, increasing the graphic impact

These tables have tops and heights in different sizes to answer all needs for home furnishing. The characteristic "T" shape comes from its role of being inserted into the corner of a sofa

PRODUCT DETAILS

Weight bearing structure in sheet metal, curved, polished and painted in burnished black

Tops available in MDF with veneering in various woods, milled and brushed marble, or thick glass (19 mm)

For the glass table tops, transparent tempered glass lacquered on the underside and with polished edges is used

NOTES
