



• Q070006XNA



• Q070009XNA



• Q070008XNA



• Q070010XNA



• Q070022XNA



• Q070021XNA



• Q070018XNA



• Q070015XNA



• Q070016XNA



• Q070015XNA



• Q070017XNA

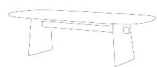


• Q070023XNA

ALL PICTURES SHOWN ARE FOR ILLUSTRATIVE PURPOSE ONLY. ACTUAL PRODUCT MAY VARY DUE TO PRODUCT ENHANCEMENT.

SCHEMATICS

ELLIPTIC FIXED



100cm x 200cm H 75cm
39,37" x 78,74" H 29,53"

110cm x 280cm H 75cm
43,31" x 110,24" H 29,53"

SQUARE CENTRAL



90cm x 90cm H 28cm
35,43" x 35,43" H 11,02"

90cm x 90cm H 40cm
35,43" x 35,43" H 15,75"

RECTANGULAR CENTRAL



60cm x 120cm H 37cm
23,62" x 47,24" H 14,57"

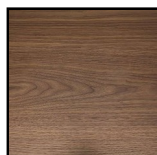
ROUND ACCENT



52cm x 52cm H 55cm
20,47" x 20,47" H 21,65"

FINISHINGS

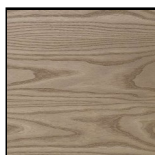
Frame finishing



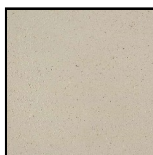
WALNUT



SMOKED OAK

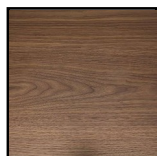


Ash
Wood/Tobacco/Ch
ampagne



LECCE BRUSHED
STONE

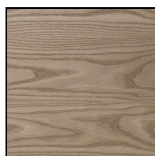
Top finishing



WALNUT



SMOKED OAK



Ash
Wood/Tobacco/Ch
ampagne

TECHNICAL INFORMATION

The new Adam collection includes an integrated Living and Dining offer of upholstered and furnishings.

The collection is characterized by organic, soft and rounded shapes.

Natural colors and elements such as wood and brushed lecce stone finish that are skillfully and elegantly mixed with the oldest craft history of Puglia.

A proposal that is the result of stylistic research involving new forms and materials. A timeless elegance and design distinguishes the Dining Adam, the new protagonist of the Natuzzi Italia Dining area.

Collection of Small Tables and Accents available in various sizes and different heights to meet the needs of living. Small tables that can live alone but become protagonists of the scene when they are matched with each other thanks also to the mix of different materials available.

Coffee tables and dining collection uses FSC certified wood.

Product features:

Elliptical-shaped dining table available in two sizes.

The coffee table collection is available in different versions, central square and elliptical.

Round corner accent table

In the wooden version, the frame has legs made of honey solid ash wood, with alternating running flame technique used to emphasize the grain and features of the wood. Central bar in honey solid ash wood.

In the all-wood version, the top is provided in honey ash essence height 5 cm with beveled edge and tone-on-tone undertop

Material and performing beauty

New brushed lecce stone finishing, an innovative stone-effect texture. It is made with natural and recycled raw materials. It is composed of a mixture of clay, natural fillers such as quartz and silica sands, recycled marble powder and acrylic binders that create natural, unique and valuable surfaces giving each element an iridescent and distinctive note. The brushed lecce stone finishing has a high aesthetic value, presenting marble veins and shades that are the result of handcrafted application

In the brushed lecce stone version, the matching central bar for all versions is always made of solid honey ash wood. In this finish, coffee tables are always provided with an undertop support in scratch-resistant anthracite Fenix.

All tables are equipped with high density non-slip felt pads that allow you to protect any type of surface

All versions are provided with a plate customized by the designer.

Made in Italy collection.

Dining table delivered in 2 packages (base with tools/top with central bar).

All coffee tables are delivered with a single package and already assembled.

NOTES
