



■ E02714X



■ E02701X



■ E02718X



■ E02707X



■ E02710X



■ E02704X



■ E02711X

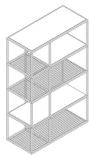


■ E02713X

ALL PICTURES SHOWN ARE FOR ILLUSTRATIVE PURPOSE ONLY. ACTUAL PRODUCT MAY VARY DUE TO PRODUCT ENHANCEMENT.

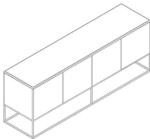
SCHEMATICS

Librerie



40cm x 90cm H 142cm
15,75" x 35,43" H 55,91"

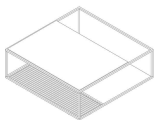
Sideboard



50cm x 180cm H 61cm
19,69" x 70,87" H 24,02"

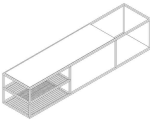
50cm x 200cm H 75cm
19,69" x 78,74" H 29,53"

square Central



100cm x 100cm H 34cm
39,37" x 39,37" H 13,39"

Rectangular MULTIFUNCTION



40cm x 120cm H 33cm
15,75" x 47,24" H 12,99"

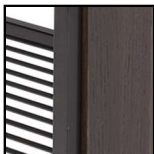
Round Accent



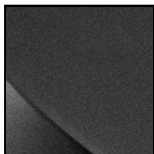
40cm x 40cm H 48cm
15,75" x 15,75" H 18,9"

FINISHINGS

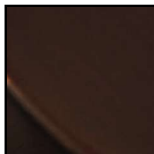
Frame finishing



SMOKED
OAK/BLACK
BRUNITO



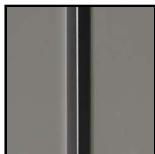
Black Brunito



Black Rose



Black Rose/Glossy
Blue



Black
Brunito/Glossy
Lead

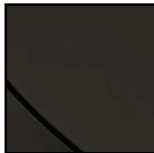
Top finishing



SMOKED OAK



GLOSSY BLUE



Glossy Lead



Volakas

TECHNICAL INFORMATION

DESIGNER: MAURO LIPPARINI

A series of elements of a universal character for diverse settings and functions. The vertical form of the bookcase, the geometrical delicacy of the desk, the ethereal side tables, the central/side coffee tables and the TV table seem to reinterpret the spaciousness of the room by combinations of surfaces and minimal volumes, in a play of overlapping layers. The style, extremely geometrical, is reinforced by the frame which, like the line of a graph, defines the surfaces, redesigns the volumes fully, recomposing the abstract three-dimensional nature of fullness and emptiness.

The entire collection stands out for a mix of matching elegant and sophisticated materials in which marble, wood and metal surfaces are combined.

PRODUCT DETAILS

Fil Rouge has a metal tubular structure with a liquid varnish coat and a burnished finish. 6 mm mesh of drawn metal rods with Tig welding.

Surfaces, shelves and side panels in sliced oak or walnut combined with surfaces in smoothed, brushed Volakasmrble.

The desk has a drawer with a drop-down door and decorative metal handles.

Self-supporting bookcase with adjustable feet.

Color variations:

Wood is a natural raw material. It presents therefore differences in color and structure.

Over time it may be subject to color variations, more or less evident, different depending on the structure of the surface or its position.

To delay this natural process, we recommend avoiding exposing wooden products to direct sunlight.

For the above, the natural variation of the woods, the variations in tonality of colors solicited by environmental or artificial lights, the minimal dimensional variations determined by anomalous rates of humidity or dryness, the veins, knots and other natural characteristics of wood products cannot be considered defects.

NOTES
