



■ E02714X



■ E02715X



■ E02716X



■ E02701X



■ E02711X

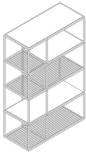


■ E02713X

ALL PICTURES SHOWN ARE FOR ILLUSTRATIVE PURPOSE ONLY. ACTUAL PRODUCT MAY VARY DUE TO PRODUCT ENHANCEMENT.

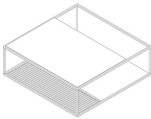
SCHEMATICS

BOOKCASE



40cm x 90cm H 142cm  
15,75" x 35,43" H 55,91"

square Central



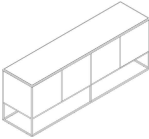
100cm x 100cm H 34cm  
39,37" x 39,37" H 13,39"

Round Accent



40cm x 40cm H 48cm  
15,75" x 15,75" H 18,9"

Sideboard



50cm x 180cm H 61cm  
19,69" x 70,87" H 24,02"

50cm x 200cm H 75cm  
19,69" x 78,74" H 29,53"

Rectangular MULTIFUNCTION



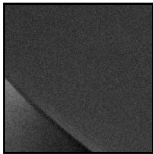
40cm x 120cm H 33cm  
15,75" x 47,24" H 12,99"

FINISHINGS

Frame finishing



SMOKED  
OAK/BLACK  
BRUNITO



Black Brunito



Black Rose



Black Rose/Glossy  
Blue



Black  
Brunito/Glossy  
Lead

Top finishing



SMOKED OAK



GLOSSY BLUE



Glossy Lead



Volakas

## TECHNICAL INFORMATION

---

DESIGNER: MAURO LIPPARINI

A series of elements of a universal character for diverse settings and functions. The vertical form of the bookcase, the geometrical delicacy of the desk, the ethereal side tables, the central/side coffee tables and the TV table seem to reinterpret the spaciousness of the room by combinations of surfaces and minimal volumes, in a play of overlapping layers. The style, extremely geometrical, is reinforced by the frame which, like the line of a graph, defines the surfaces, redesigns the volumes fully, recomposing the abstract three-dimensional nature of fullness and emptiness.

The entire collection stands out for a mix of matching elegant and sophisticated materials in which marble, wood and metal surfaces are combined.

### PRODUCT DETAILS

Fil Rouge has a metal tubular structure with a liquid varnish coat and a burnished finish. 6 mm mesh of drawn metal rods with Tig welding.

Surfaces, shelves and side panels in sliced oak or walnut combined with surfaces in smoothed, brushed Volakasmrble.

The desk has a drawer with a drop-down door and decorative metal handles.

Self-supporting bookcase with adjustable feet.

Color variations:

Wood is a natural raw material. It presents therefore differences in color and structure.

Over time it may be subject to color variations, more or less evident, different depending on the structure of the surface or its position.

To delay this natural process, we recommend avoiding exposing wooden products to direct sunlight.

For the above, the natural variation of the woods, the variations in tonality of colors solicited by environmental or artificial lights, the minimal dimensional variations determined by anomalous rates of humidity or dryness, the veins, knots and other natural characteristics of wood products cannot be considered defects.

NOTES

---