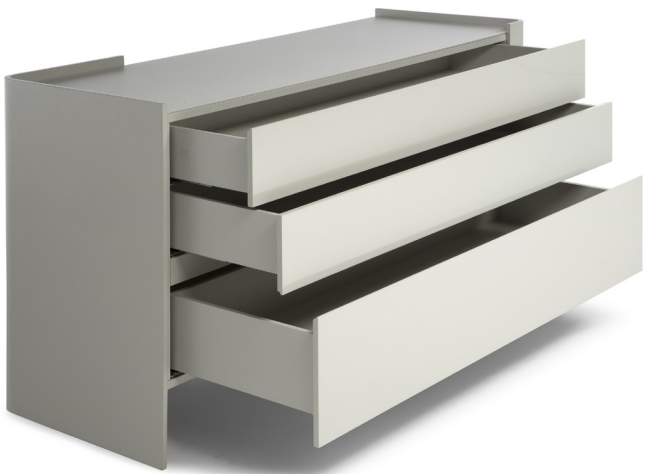




■ B01003X



■ B01003X



■ B01004X



■ B01004X



■ B01006X (left side)

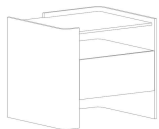


■ B01001X (right side)

ALL PICTURES SHOWN ARE FOR ILLUSTRATIVE PURPOSE ONLY. ACTUAL PRODUCT MAY VARY DUE TO PRODUCT ENHANCEMENT.

SCHEMATICS

BEDSIDE TABLE LEFT



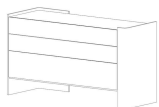
60cm x 50cm H 53cm
23,62" x 19,69" H 20,87"

BEDSIDE TABLE RIGHT



60cm x 50cm H 53cm
23,62" x 19,69" H 20,87"

SIDEBOARD WITH DRAWERS



50cm x 140cm H 78cm
19,69" x 55,12" H 30,71"

140cm x 50cm H 78cm
55,12" x 19,69" H 30,71"

FINISHINGS

Frame finishing



WHITE CHALK



MINK



Ash
Wood/Tobacco/Ch
ampagne

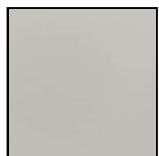


Walnut 2017



Smoked Oak
Termocotto

Top finishing



WHITE CHALK



MINK



Ash
Wood/Tobacco/Ch
ampagne



Walnut 2017



Smoked Oak
Termocotto

TECHNICAL INFORMATION

DESIGNER: Bernhardt & Vella

The Fenice bedroom collection creates aesthetics based on lightness and purity. A proposal that enhances the welcome created by the wide padded headboard of the Fenice bed which fits into the collection perfectly. A truly complete set, with a chest of drawers and bedside tables.

PRODUCT DETAILS

Structure in curved poplar plywood with outer parts in MDF (Medium Density Fiberboard) with a matt lacquered or wood plated finish.

The drawer fronts are in MDF with solid wood edges finished in various colours of gloss lacquer or wood. The top of the chest of drawers is in finger-print resistant glass, lacquered on the underside (4 mm thick).

Bedside table available only with top in wood. Drawers with a matt lacquer internal coating in the same colour as the exterior. Chest of drawers with push-pull opening mechanisms with amortized Blum motion closure.

Non-slip and anti-imprint feet in ABS available for both the chest of drawers and the bedside tables.

NOTES
