



■ T873002XNA



■ T873002XNA



■ T873001XNA (draft image)



■ T873003XNA (draft image)

SCHEMATICS

ELLIPTIC FIXED

64cm x 64cm H 1cm
25,2" x 25,2" H 0,39"

240cm x 110cm H 76cm
94,49" x 43,31" H 29,92"



ROUND FIXED



140cm x 140cm H 76cm
55,12" x 55,12" H 29,92"

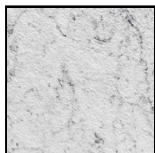
160cm x 160cm H 76cm
62,99" x 62,99" H 29,92"

FINISHINGS

Frame finishing



WHITE MATT

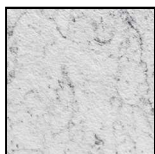


CARRARA
MARBLE

Top finishing



WHITE



CARRARA
MARBLE

TECHNICAL INFORMATION

Libra is a table designed by Claudio Bellini for the dining area, characterized by refined and thin lines. The sinuous legs, exceptionally made of marble, play on the contrast between the solidity of this material and the lightness of the design: the project seems to want to defy gravity with the legs apparently balanced on an edge.

The combination of materials, marble for the structure and BETACRYL® for the top, reveals an aesthetic research in which elements with opposite characteristics - naturalness and technology, glossiness and opacity - blend harmoniously, giving the project an image that is both classic and contemporary.

Libra has a round version for more compact spaces, and an elliptical version with more generous dimensions.

PRODUCT DETAILS

Shaped top glossy white BETACRYL® (6mm) for the elliptical version and in Carrara marble for the round version.

Legs in white polished carrara marble worked with water cutting and coupled in 2cm shaped slabs.

Internal core of the legs made of a layer of 12mm metal, supported by plates and hooked to a metal frame in the undertop.

Reinforced undertop with MDF (50 mm).

Adjustable plastic feet.

BETACRYL® Pure Acrylic Stone is a Solid Surface material made of two-thirds of aluminum hydroxide, a third of acrylic resin and natural pigments. The aluminum hydroxide gives the product a particular strength, the quality of the acrylic resin ensures cleanliness, suitability for contact with food, water resistance and colour stability over time.

Despite its consistency, similar to natural stone, BETACRYL® is restorable and can be fabricated with woodworking equipment.

It can be seamlessly joined. BETACRYL® complies with the Euroclass B-s1-d0 standards.

Available upholstery categories: Fabric (cat. 83 and cat 99 - special fabric category 9K), Leather (cat. 15 Lemans and cat. 30 Stromboli)

For each categories of leather and fabric activated for this chair, all the colors in the Natuzzi leather and fabric sample are available

Available with leather or fabric covering, with or without armrests, the chair is characterized by soft and rounded lines and a tall backrest that guarantees high-quality comfort.

A modern and slender project that meets the modern needs of versatility without sacrificing the indistinguishable quality and elegant aesthetic refinement of Natuzzi Italia.

NOTES
